

Twin

twinenglishcentres.com

+44 (0) 20 8269 5678



# Twin English Centres

London • Dublin • Eastbourne

2024





# Welcome to Twin English Centres

It has been a long time since we first opened our doors and took in our first students, and we are so proud of how far we have come in the last 27 years. We remain as dedicated as ever to providing a high quality learning experience for you. Our accredited English language centres are all in fantastic locations, and you stand to gain so much more than just a language education from your time with us.



“After a record-breaking year, we are delighted to introduce our exciting 2024 offer, spanning English language, internships, group travel, and teacher training programmes. We look forward to welcoming students to our fabulous centres in London, Dublin, and Eastbourne as we seek to grow opportunity in education and employability for all. - Caroline & Jacqui Fox - Founders

To view our other products visit us at:



Summer Centres



Internships



School Group Travel

## Twin's commitment to safeguarding

The safety and well-being of students is our highest priority. Our centres are accredited, and our safeguarding standards are enforced with the following:

- 24-hour emergency contact number
- All activities and excursions adhere to adult to child supervision ratios of:
  - 9-12 years – One adult to eight children
  - 13-18 years – One adult to ten children
- Individual students assigned to a dedicated Twin Group Leader
- Safeguarding Lead on duty in each centre at all times
- Staff recruitment is carried out by staff trained in NSPCC Safer Recruitment course
- Enhanced DBS, Garda vetting, or other country-specific police checks are carried out on all staff



# Contents

## The Twin Experience

Studying with us	04
How we work with you	05
Our commitment	06

## Our schools

Our locations	08
Twin London	10
Twin Dublin	12
Twin Eastbourne	14
Student life after class	16
Accommodation	18
Student learning	20

## Our courses

General English	22
Intensive English	24
- IELTS Preparation	25
- Communication Skills	25
- English for Careers	25
Academic Year in Dublin	26
English Unlimited	28
English for 30+	29
English for Business Professionals	30
Teacher Development	31
Parent and Junior English	32
Junior English	33
One-to-one	34
Courses for closed groups	35
Work Skills and Employability	36
Young Entrepreneur	37

Other Twin products	38
---------------------	----

Course quick reference guide	39
------------------------------	----

# Growing Opportunity in Education & Experiences



## The Twin Experience

### An experience to remember

Because of our many years of experience, we have learnt to grow and adapt with our students. Our teachers work with you to discover and improve your strengths and weaknesses. We will help you to set achievable goals, and will give you the support you need to reach them.

### Why study abroad?

The best way to learn a language than to surround yourself with it. At Twin, you can learn English in an English-speaking country while experiencing the culture, the people, and the traditions. No matter your conversation skills when you arrive, the lessons you learn in class will give you the confidence you need.



### Engaging with peers

Our project work curriculum ensures you engage with classmates, so that you can share the challenges and rewards of learning together, while getting to know each other. We don't want you to just sit in class listening to teachers. With project work you get to be a lot more involved in your learning.

Create memories with rewarding tuition and fun social experiences



# How we work with you

## Stage 1

### Initial assessment



You will start your journey with a placement test and a one-to-one assessment with a senior teacher, to ensure you are placed at the right level to achieve your goals.

## Stage 2

### Online access



Access to the Twin e-Learning platform: A large online library of study materials for you to use at any time, anywhere via a mobile phone or computer.

## Stage 3

### Homework



Homework options based on your course and interests to help you learn faster and gain the maximum benefit from your time with us at Twin.

## Stage 4

### Reviews



Regular class reviews allow you to see how far you've come and discuss the topics for next week, helping to ensure you are on track to achieve your targets.

## Stage 5

### Study programme



Our study programme updates weekly. This means you can do as many weeks as you like and change easily between different types of classes and reach your desired outcome.

## Stage 6

### Completion of study



Receive your completion certificate and academic report upon request, and keep access to e-Learning for up to three months to continue practising your English.



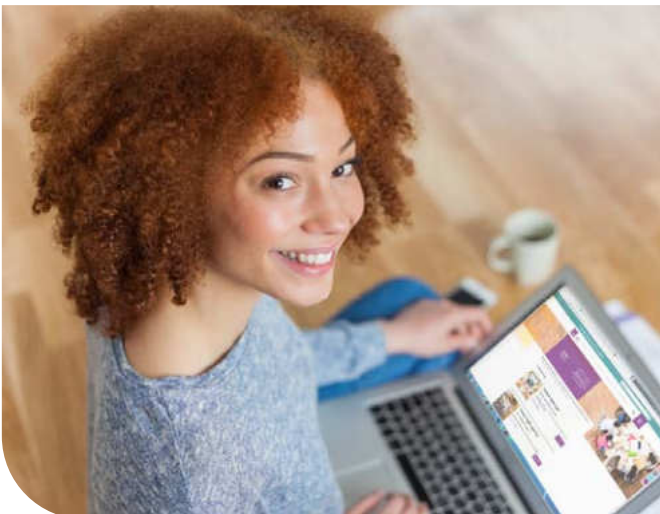
## Our commitment

### We want to help you make progress

Before you start your studies with us, we assess your current language ability to ensure you are placed in the class that is best suited to your needs. Our teachers want every student to achieve their goals.

Throughout your time at Twin, teachers provide regular feedback so you know which areas to focus on for improvement.

“Speaking with people and sharing my thoughts on various topics we have discussed during lesson time was helpful. I have enjoyed talking to students and I find the teachers nice and friendly” - Jisu Kim, South Korea



### 24-hour student support

We offer 24-hour emergency support to all students, and a higher level of support to students under 18, including a separate induction and weekly welfare tutorials. Students aged 16/17 are generally not supervised outside of class time, but we will still provide guidelines for their safety.

We are committed to providing the best possible experience

# English for practical applications

Our teachers combine project work and 'the communicative method' to help you learn better. Whether you study English in the morning or in the afternoon, we focus on developing your communication, fluency, and conversation skills. At the end of your course you should be more confident using English in your real-world, day-to-day life.



## Projects

We have a project work-based curriculum throughout our English centres. Project work is a learning method where students work together with real-life questions and present them in a variety of ways, including blogs, podcasts, mini exhibitions, etc. It is a great way for you to develop other skills such as problem-solving, collaboration and creativity whilst practising and developing your English.

## The Tools to Help

To help you make better progress, you get access to our rich online platform – built to support your learning. Twin e-Learning has a fantastic collection of libraries and learning resources, progress tests, individual reports, and your feedback – all in one place. You will get to use this great learning tool for up to three months after completing your studies. This lets you continue to practise and improve your English even after your course has ended.



## Students Services

We know how important it is that your educational travel is rewarding. We also want you to have an enjoyable stay when studying at our English centres. Our staff will help you to make the most of your time with us. They will be there to give advice and guidance, answering any questions you might have.

We can suggest places to go, things to see and do, as well as solve practical issues such as where to get a SIM card or healthcare and travel.

Please let us know if we can help you with anything





## Our locations

We have three schools, each with its own distinctive character. Each school offers a great learning experience, and you can choose your preferred location.

- A striking modern school in Greenwich, London (a borough full of fantastic visitor sites), shared with a large leisure and fitness centre, available to Twin students at an extra charge.
- An elegant Georgian building in the heart of Dublin, with its great social life and beautiful surrounding countryside. You can make the most of Ireland's welcoming visa policies with our special 'Academic Year in Dublin' programme.
- A converted historic mansion in Eastbourne, situated in its own beautiful grounds, minutes away from the sea in the UK's sunniest town, close to exciting tourist destinations such as London and Brighton.



### Something for everybody

Each of our centres is ideally located in its town or city. Our London English centre is a short commute from the city centre, in the attractive Royal Borough of Greenwich, while our Dublin school is right in the city centre. Students at Twin Eastbourne will find themselves studying only moments away from the town centre and the seafront.

Choose between our schools for a unique experience



## Scotland

### Dublin, Ireland



With the youngest population of any European capital, Dublin combines vibrant culture with traditional Irish heritage.

See page 12 for centre information

961 km  
UK Length top to bottom

## Ireland

### Greenwich, London



Greenwich is famous for its naval history, and is only a short journey to the excitement of central London.

See page 10 for centre information

### Eastbourne



A tourist destination for over 100 years, Eastbourne is a peaceful getaway for those who enjoy fresh air and outdoor activities.

See page 14 for centre information

## England



414 km  
IRE Length top to bottom



# Twin London

Based in London's Royal Borough of Greenwich, our modern school and headquarters are surrounded by an area full of historical and cultural landmarks.

## Our programmes

### Standard Programmes (15hrs)

- General English Morning
- General English Afternoon
- English for 30+

### Intensive Programmes (up to 30hrs)

- General English (AM) & Elective (PM)
- English Unlimited

### Elective Programme Options (6hrs)

- Communication Skills
- IELTS Preparation
- English for Careers

### Fixed Date Programmes

- English for Business Professionals (23hrs)
- Junior English
- Parent and Junior English

### Tailored Packages (closed groups)

- Work Skills and Employability
- Young Entrepreneur
- Professional Development for Teachers

We can tailor packages for any specific purpose or sector upon request.



The London Centre's entrance

## Study in the UK's capital

With a wide selection of on-site amenities, our London school offers more than just English learning: it is a place for recreation and enjoyment too. Lessons at our British Council accredited school take place in our fully air-conditioned, bright, and modern classrooms. Students can socialise in our spacious student area, and study in the free public library\* or our self-study centre. There is free Wi-Fi throughout the school and an on-site library, allowing students to learn and entertain themselves outside of lesson times.



The London Centre's reception



Students using the public library at The Greenwich Centre

### Centre Facilities

- 20 classrooms
- Self-study zone
- Fitness centre\*
- Swimming pool\*
- Disabled access
- Public library\*



Accredited by the  
**BRITISH COUNCIL**  
for the teaching  
of English in the UK

A modern school in the capital city, located in a Royal borough



# After school in London



Aboard the Cutty Sark, Greenwich

## Explore Greenwich

You don't even need to travel into central London to find things to do. With a strong royal and maritime history, Greenwich is home to several important landmarks, including the Royal Observatory and the Cutty Sark ship. You can enjoy pubs, restaurants, and shops. There is always something to be found in the famous Greenwich Market.

### Popular attractions

The Cutty Sark • The Royal Observatory • Old Royal Naval College  
The O<sub>2</sub> Arena • The London Cable Car • Queen's House



Big Ben - Westminster



The King's Guard

## Explore London

It's easy to see why London is one of the most popular cities in the world. Everything from fine art to noisy nights out can be found in the capital.

Excellent transport links around our London school make travelling into the centre very easy, taking just 30 minutes to get to famous locations such as Trafalgar Square, Piccadilly Circus, and Covent Garden.

### Must see local destinations

Big Ben and the Houses of Parliament • The London Aquarium  
• Oxford Street • The West End • Buckingham Palace



London city skyline - Tower of London

## Twin English Centre London - Adult (16+) Timetable

Time	Lessons	Monday	Tuesday	Wednesday	Thursday	Friday
09.00 - 12.30 including break	20	General English with project work	General English with project work	General English with project work	General English with project work	General English with project work
	12	–	General English	General English	General English	–
13.30 - 17.00 including break	8 per elective	Communication Skills / English for Careers	IELTS Preparation	Communication Skills / English for Careers	IELTS Preparation	–
	20	General English with project work	General English with project work	General English with project work	General English with project work	General English with project work

So much to explore in the UK's capital

# Twin Dublin

Our English Centre in Dublin is located in the middle of this vibrant capital city, so our students are perfectly placed to enjoy all the sights, sounds, and attractions the city has to offer.

## Our programmes

### Standard Programmes (15hrs)

- General English Morning/Afternoon
- Academic Year in Dublin
- IELTS Morning/Afternoon

### Intensive Programmes (up to 30hrs)

- General English (AM) & Elective (PM)
- English Unlimited

### Elective Programme Options (6hrs)

- Communication Skills
- IELTS Preparation
- English for Careers

### Fixed Date Programmes

- Professional Development for Teachers
- English for 30+

### Tailored Packages (closed groups)

- Work Skills and Employability
- Young Entrepreneur
- English for Business Professionals

We can tailor packages for any specific purpose or sector upon request.



The Dublin Centre at North Great George's Street

## Study in the capital city of Ireland

Twin's two premises in Dublin mix 19th century architecture with modern technology and conveniences. Located on North Great George's Street and Gardiner Place, both buildings are perfect for after-school activities and exploration. Ireland's generous non-EU work rights for students allow for long-term language learning in an English-speaking work environment. Twin English Centre Dublin is accredited by ACELS and is a member of MEI (Marketing English in Ireland).



### Centre Facilities

30 classrooms  
Student lounge  
Student kitchen  
Library  
Study room  
Student computers





# After school in Dublin



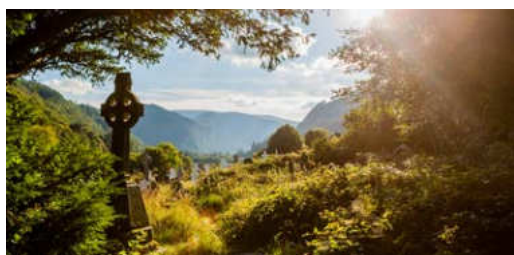
The famous Temple Bar



The Cliffs of Moher



The Giant's Causeway



An historic Celtic Cross - Wicklow Mountains

## Explore Dublin

Dublin is a city with a fascinating history. Walk along the streets to discover ancient buildings, historical sites, street art, memorials, and modern architecture. Be charmed by the street traders, have fun in the Leprechaun Museum, or forget you're in a city and take a break by visiting the Iveagh Gardens. As the fourth UNESCO City of Literature, culture is celebrated everywhere, from live Irish music to a vibrant pub culture - there is always something to discover.

### Popular nearby attractions

The National Gallery of Ireland • Temple Bar • Guinness Storehouse  
• The Book of Kells & Trinity College • Dublin Castle

## Explore Ireland

Famous for its welcoming and friendly people, as well as beautiful countryside, Ireland's contrast of ancient culture and modern youthful population make for a fascinating destination. With breathtaking destinations as nearby as the Hill of Tara, less than an hour's drive from the capital, you can really feel the majesty of this country's historic background.

### Must see destinations

The Lakes of Killarney • The Cliffs of Moher • The Giant's Causeway  
• The Ring of Kerry • Wicklow Mountains

## Twin English Centre Dublin - Adult (16+) Timetable

Time	Lessons	Monday	Tuesday	Wednesday	Thursday	Friday
09.00 - 12.30 including break	20 per course	General English with project work/ IELTS Preparation	General English with project work/ IELTS Preparation	General English with project work/ IELTS Preparation	General English with project work/ IELTS Preparation	General English with project work/ IELTS Preparation
	12	-	General English	General English	General English	-
13.30 - 17.00 including break	8 per elective	Communication Skills/English for Careers	IELTS Preparation	Communication Skills/English for Careers	IELTS Preparation	-
	20 per course	General English with project work/ IELTS Preparation	General English with project work/ IELTS Preparation	General English with project work/ IELTS Preparation	General English with project work/ IELTS Preparation	General English with project work/ IELTS Preparation

This youthful capital has no shortage of attractions

# Twin Eastbourne

Our school is set in ten hectares of private grounds. It is located just 15 minutes from the centre of Eastbourne, and it is close to the South Downs National Park, Beachy Head, Seven Sisters, and Cuckmere Haven.



The Eastbourne Centre

## Our programmes

### Standard Programmes (15hrs)

- General English Morning

### Intensive Programmes (up to 30hrs)

- General English (AM) & Elective (PM)
- English Unlimited (27hrs)

### Elective Programme Options (6hrs)

- Communication Skills
- IELTS Preparation
- English for Careers

### Fixed Date Programmes

- English for Business Professionals (23hrs)
- Summer Programmes (see Summer Centres brochure for more information)

### Tailored Packages (closed groups)

- Professional Development for Teachers
- Work Skills and Employability
- Young Entrepreneur

We can tailor packages for any specific purpose or sector upon request

## Study in an iconic English seaside town

A traditional English gem; gardens and grounds surround this beautiful stately home. With history dating back to the Roman invasion, this town is the perfect location for the student looking for a quieter experience than London or Dublin. Accredited by the British Council, our Eastbourne school lets you alternate informative classes with scenic views and outdoor experiences. You can choose to study in your choice of library, study centre or computer room.



Computer room

### Centre Facilities

Student lounge  
Sports fields  
Tennis courts  
Library  
Dining hall  
Computer room



Accredited by the  
**BRITISH COUNCIL**  
for the teaching  
of English in the UK

An historic centre based on England's south coast



# After school in Eastbourne



The Eastbourne seaside pleasure pier



Royal Pavilion - Brighton



St. Paul's - London



Spinnaker Tower - Portsmouth

## Explore Eastbourne

Known as the sunniest town in the UK, Eastbourne has mild winters and warm summers, giving visitors a friendly and relaxed atmosphere to enjoy. Eastbourne hosts numerous attractions and activities throughout the year. The town centre has theatres, cinemas, an art gallery, as well as golf courses, tennis courts, bowling alleys, and a yachting marina. The town also hosts annual events such as the Aegon International Tennis Tournament, and Eastbourne International Airshow, the largest free air show in the UK.

## Popular nearby attractions

Eastbourne Pier • International Tennis Tournament (June) • Sovereign Harbour • Eastbourne Airshow (August) • Beachy Head • Towner Gallery

## Explore England's South Coast

There is no shortage of beautiful cities and towns on the south coast of England. Day trips to classic holiday destinations like Portsmouth, Brighton, and Hastings are easy with great transport links. These places allow the chance to mix history with exploring natural wonders.

## Must see destinations

London • Brighton • Portsmouth • Hastings • Lewes • Bournemouth

## Twin English Centre Eastbourne - Adult (16+) Sample Timetable

Time	Lessons	Monday	Tuesday	Wednesday	Thursday	Friday
09.15 - 12.45 including break	20	General English with project work	General English with project work	General English with project work	General English with project work	General English with project work
	12	-	General English	General English	General English	-
13.45 - 17.15 including break	8 per elective	Communication Skills/English for Careers	IELTS Preparation	Communication Skills/English for Careers	IELTS Preparation	-

Step back in time in this beautiful part of the UK





# Student life after class

## The Twin Social Programme

Each of our three schools has a dedicated Social Programme, where we organise a broad range of activities, excursions, and experiences, both free and available for a small fee. Additionally, we suggest potential activities you can do in your own time, such as destinations to visit. We offer you the chance to sign up for in-house creative and leisure activities, trips to local landmarks and excursions to destinations a little further afield. Sometimes we go out for bowling nights or even visit a historic pub with our older students!

Each week you can find the schedule on the noticeboard in your school's common area as well as on our Instagram highlights and daily stories @TwinEnglishCentres. We also love to share photos and videos of our students enjoying the Social Programme experience, so don't forget to tag us!





## Add-on services

We can provide a variety of additional services depending on your requirements.

### Activities

Every Friday afternoon we offer workshops in our London centre for an additional fee. These cover topics from employability to self-defence, so make sure to ask student services what workshop is running on a given week. In addition to our activities and excursions around London, we are happy to help organise high quality tours with Blue Badge Guides as well as helping you get tickets for cultural events around the city.



### Transport

It can be intimidating to arrive in a new place. We do our best to ensure students have a smooth and comfortable arrival and departure to the country by taking care of the connection travel to and from the airport. Additionally, we offer an unaccompanied minor service for students below the age of 18 as needed.



### Insurance

We can organise travel and medical insurance as needed.

### Dining

In addition to the board provided in our accommodation choices, we can arrange meals, whether packed lunches or restaurant dining, while taking care of any special dietary requirements.



I like the teachers because they are very friendly. They always make lessons really fun and exciting and I have made a lot of friends - Ahmed Salim, Oman





A common dining area in a residence

## Accommodation

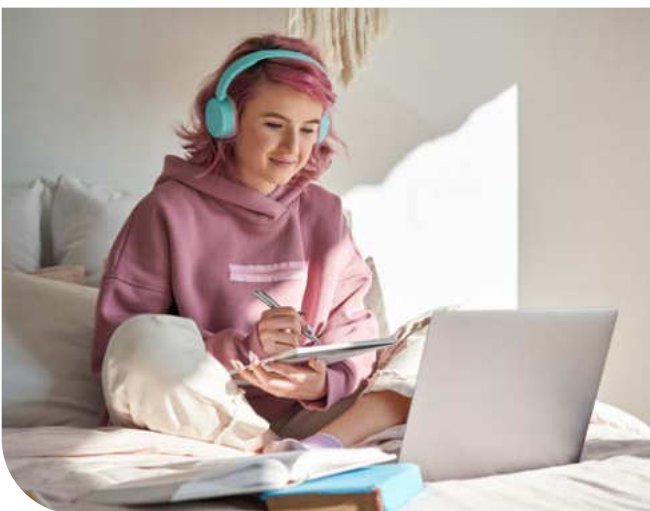
Our accommodation is carefully chosen to match every need. Options include homestays, residential, and hotels, with a variety of catering arrangements.

### Homestay

When you choose to stay in homestay accommodation you have the opportunity to practise English outside of the classroom while living in a welcoming environment.

We have our own accommodation team for sourcing friendly and comfortable homestay options in South London, Eastbourne, and Dublin.

We also work with trusted homestay providers to deliver a quality experience that ensures you are safe, comfortable, and happy with your host.



Example of a homestay room

### Homestay options

- Room options: single or twin\* rooms available
- Meal options: breakfast only, breakfast and lunch, or breakfast, lunch, and dinner
- Communal areas for relaxing and socialising
- Laundry service\*\*

A wide range of accommodation options to suit all needs



# Your other options

We have a variety of options, located across the UK and Ireland. By partnering with quality accommodation providers, we aim to ensure that all your needs will be met, whatever your budget



Example of a residence room

## Residential

Our residential partners provide a friendly student atmosphere and excellent locations. Student residential stays are ideal for anyone who wants to be around other students but have more privacy than in a hostel. We have residential partners in London and Dublin that offer a great setting for more independent students.

## Hostels and Hotels

Hostels are the ideal alternative if you who want to share with other young people in a relaxed atmosphere, whereas hotels can offer you more comfort and privacy. We partner with several quality hotels and hostels across the UK and Dublin, offering a range of options for a relaxing stay. Hotels are also ideal for group leaders or small groups of students.



Example of a hotel room



## Houses/Flats

We have secured flat and home-share accommodation for Twin students in London and Dublin, close to our English Centres. This type of accommodation offers students more freedom and independence, allowing them to fully enjoy the experience of travelling and studying abroad. Students can enjoy their independence with the security of knowing that there will be other flatmates to help them feel at home.





## Student Learning

### Teaching methodology

Our courses are specifically designed with your needs in mind. We know you have certain expectations when it comes to learning, so we aim to keep you on track.

On average, our students progress one CEFR level every 12 weeks. Throughout the course, our teachers monitor progress with tests and personalised assessments, so we can offer extra support in any areas you are struggling with.

### Achievements

Our teachers will help you to reach your goals with progress tests and tutorials, and will provide additional assistance where needed. At the end of your course, you will receive a Twin Certificate of Achievement and a progress report upon request, which states your current level.

### An international experience

We pride ourselves in offering a truly international experience, and have students from different countries around the world. Making friends and speaking with other students is important and helps your conversational skills, and so improves your language skills even more.



# Staying on track

There is no completely accurate equivalent between the courses and the CEFR, Cambridge, and IELTS levels, but we know well what skills are required for each level, and can help you ensure the English course you are following is the right one for you.

## Your Twin Progress Chart

Level	CEFR	Cambridge Exams	IELTS	Description	Courses available
Beginner	A1	N/A	N/A	You have a small basic vocabulary and can understand English used in everyday situations if the speaker speaks clearly and slowly.	General English • Academic Year in Dublin • Intensive English • English Unlimited • Communication Skills • One-to-one • On demand courses
Elementary	A2	N/A	2	You can communicate in a range of everyday social and travel contexts. You are familiar with basic grammar but need to develop this further. You need to develop your vocabulary and listening skills.	<b>All of the courses above, plus:</b> • Parent and Junior • Junior English
Pre-Intermediate	A2+	Key (formerly KET)	3	You can understand and communicate personal information with enough language for everyday practical needs. However, in more complex situations, you still find it difficult to use appropriate vocabulary and grammar so you need to develop your fluency and accuracy to avoid the breaking down of communication	<b>All of the courses above</b>
Intermediate	B1	B1 (formerly PET)	4-5	You can speak English with some confidence and understand much of what you read and hear. You have a reasonable vocabulary and can survive well in most situations. Improve by developing your fluency and accuracy, and use more complex structures and sophisticated vocabulary.	<b>All of the courses above, plus:</b> • IELTS Preparation • English for Careers • English for 30+ • English for Business Professionals • Teacher Development • Work Skills and Employability • Young Entrepreneur
Upper Intermediate	B2	B2 First (formerly FCE)	5.5-6.5	You can use English effectively. Improve by learning to discuss, argue and express opinions in a culturally acceptable way. Refine your use of grammar and vocabulary.	All courses
Advanced	C1	C1 Advanced (formerly CAE)	7-8	You can express yourself clearly and effectively and have a sound grasp of major tenses and grammatical structures. Improve by extending your vocabulary and refining your use of style and register.	All courses

Please let us know if we can help you with anything



Location: London, Dublin, Eastbourne

English level: Beginner - Advanced

Student age: 16+

Lessons: 20 per week (15hrs),  
12 per week (9hrs) for part time

#### Availability:

Mornings and afternoons year-round at  
London and Dublin

Mornings only year-round at Eastbourne

Certificate of attendance upon completion

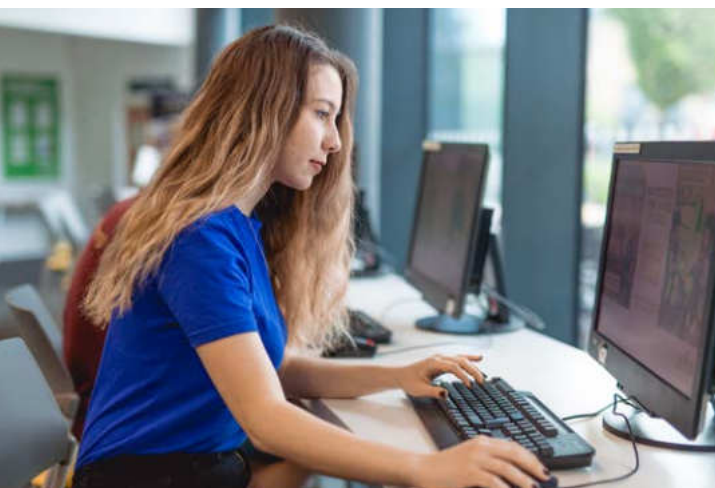
## General English

Our most popular course for students of all levels to improve their overall language skills.

Before learning begins, you will be assessed and placed in a class with other learners at the same level as you. In class we will focus on improving:

- Reading
- Writing
- Pronunciation
- Listening
- Grammar
- Vocabulary

All our courses have a communicative teaching approach, as well as being supported by project work. This teaching method helps you learn English as well as more about British or Irish culture. Lessons are partly task/project based with students and teachers working together to improve fluency, accuracy, and understanding.



Using the public library at the London Centre

### Course Benefits:

- Improve your confidence in listening and speaking
- Improve your understanding of grammar, and vocabulary
- Improve your reading and writing
- Communicate more effectively
- Access to our Twin e-learning platform

Our most popular English course





## General English explained

Our popular General English course is available to fit a variety of schedules.



### Morning (AM)

Our General English Morning course offers an early start by taking part in group tasks, learning English while developing other skills such as problem-solving, collaboration, and creativity.

### Afternoon (PM)

Our General English in the afternoon course is a great option if you have busy mornings or are the kind of person who works better in the afternoon. We are happy to offer you the chance to learn more and do more, starting after lunch. Please note: Afternoon English is not available in Eastbourne.



### Part-time

We understand not everyone can (or wants to) attend English courses full-time, so we offer you the option to start your English speaking journey part-time.

### Beginner General English

For those studying in the UK and who are beginning with very low or no ability in English, we can arrange dates during the summer months to assist from the very start until you are happy with your level of English.

“In my class I learned from the ground up,  
the teacher made everything so interesting.

- Inez, Portugal

Pick a course that works for your schedule





Location: London, Dublin, Eastbourne

English level: Beginner - Advanced

Student Age: 16+

Lessons: 28 per week (21hrs)

#### Availability:

General English mornings, elective afternoons year-round. Electives also available part-time year-round

Certificate of attendance upon completion

## Intensive English

You can improve your English learning by adding a specialist elective course.

Tuition can be made intensive by adding afternoon lessons to your General English morning course. You can choose between IELTS Preparation, English for Careers, or Communication Skills. Intensive English gives you the freedom to choose which area you want to focus on and improve.

### Course Benefits:

- More class time for structured learning
- Improve your English level at a faster pace
- Additional lessons in specific subject matter
- Access to our Twin e-learning platform



“We enjoyed the trip, thank you for the awesome experience!

- Luiz, Brazil

Please note: All courses in this brochure are available year-round for closed group booking

Customise your learning experience



## Intensive electives

You can choose specific Intensive English electives to add value to your General English morning course. Alternatively, you can study just these electives as part time courses.

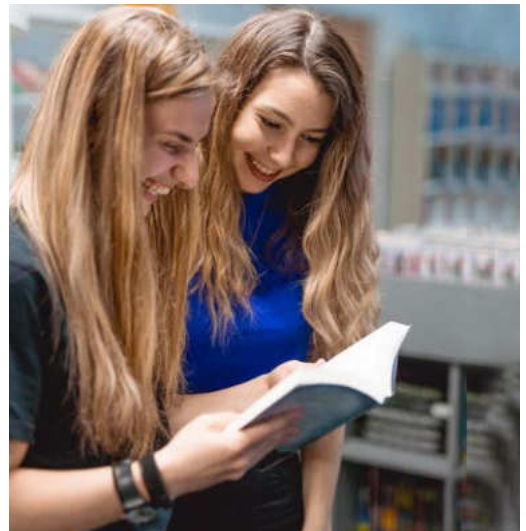


### IELTS Preparation

A good score in IELTS (International English Language Testing System) can open up a world of opportunity. This elective will teach you the IELTS exam requirements and format. Classes include practice of all question types to ensure that there are no surprises on the exam day. We can also help you to apply for the exam in one of the nearby test centres. Please note that students need to be at least B1 (Intermediate) level in order to join IELTS Preparation.

### Communication Skills

Even when you know the right words, using them can still be difficult. This course can help to build your confidence. Our Communication Skills elective focuses on speaking in a variety of real-life situations. You will practise your skills with group discussions, role-plays, and debates. Our classes will expand your vocabulary and improve your pronunciation. If you require additional help with your speaking and listening skills, then this course is for you.



### English for Careers

The course is ideal for anyone who uses English in their job or is looking for a job in an English-speaking environment. You will learn practical workplace language, as well as how to apply for a job. We will take on all job seeking challenges with you, from the application process to CV writing, and interview tips.

You can still benefit even if you are not currently looking for a job, because this course also covers email writing, telephone skills, presentation skills, customer care, negotiating skills, and meeting participation.





Location: Dublin

English level: Beginner - Advanced

Student Age: 21+

Lessons: 20 per week (15hrs)

Duration: 25 weeks + 8 weeks holiday

#### Availability:

This course runs year-round

## Course Benefits:

- Long term course
- Includes the right to work for non-EU students
- Regular assessment and feedback
- Access to our Twin e-learning platform

Certificate of attendance upon completion



## Academic Year in Dublin

Study English for a full academic year and discover the sights, history, and culture in the Irish capital

Our Academic Year in Dublin course gives you the chance to gain an internationally recognised English qualification\* while having the opportunity to experience Irish culture. Our course options allow you to enrol for either the General English morning or afternoon course, or the IELTS Exam Preparation course.

Our Academic Year course is a great offering for non-EU students, because when enrolled, they have the right to work part-time while completing their course in Ireland. The course will help you communicate well in everyday situations, and our qualified teachers approach to teaching English ensures that classes are kept interesting. Our flexible timetabling leaves plenty of time to work part-time

### Improve your English with this 33-week course

With all that Dublin offers, it's no surprise the number of international visitors continues to grow as word spreads about Europe's most exciting city destination. There are many reasons why over 150,000 international students are studying, living, and working in Ireland's vibrant capital city. Dublin's generous student visa policies and its dynamic business life are a big part of why Dublin has become a hub for part and full-time career opportunities.




### Non-European work rights

Non-EU students can work up to 20 hours per week during their course and up to 40 hours on fixed holidays.



Study English for a full academic year in Ireland





“There is a nice student community  
at Twin, a good mix of nationalities.  
I felt like every student matters  
- Rosie, Brazil



Location: London, Dublin, Eastbourne

English level: Beginner - Advanced

Student Age: 16+

Lessons: Up to 40 per week (30hrs) in London and Dublin. Up to 36 lessons (27hrs) in Eastbourne.

#### Availability:

This course runs year-round

Certificate of attendance upon completion

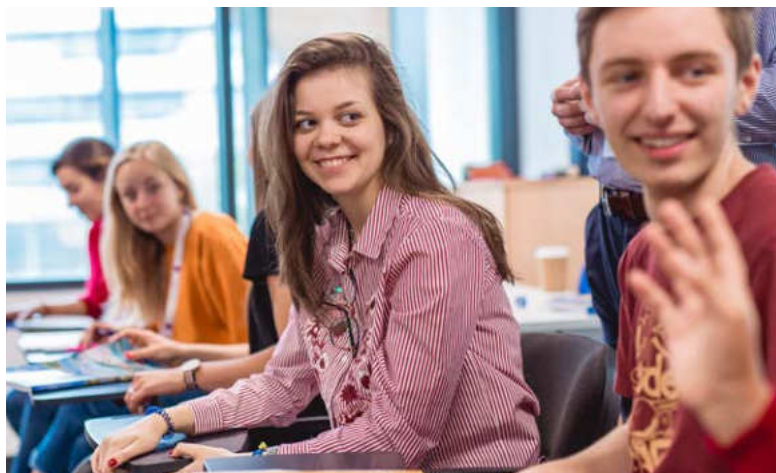
## English Unlimited

Great value from a wide range of courses.

Our English Unlimited option allows you to study what you want, and as frequently as you want at a fixed price. Simply sign up for the courses you want to attend in the morning and choose the afternoon classes that will help you on your educational journey. With more English lessons per week, you have the opportunity to increase your English language skills faster.

### Course Benefits:

- More classes at a fixed cost
- Improve your English level at a faster pace
- Additional lessons in a chosen topic
- Access to our Twin e-learning platform



### Courses and electives:

- General English
- IELTS Preparation
- Communication Skills
- English for Careers



Study as much English as you like!





Our Courses



## English for 30+

English language lessons with cultural experiences.

If you're interested in British or Irish history, politics, and culture, this is the course for you. Small class sizes and an older cohort (30+) allow you to get to know your peers and teacher significantly better as we cover more advanced topics than our other courses. With lessons specifically focused on preparing for, and learning about, the destinations of the week's trips, you will be sure to get the most possible out of each trip.

### Immerse yourself in English and Culture

This course is delivered with a priority given to learning about culturally specific English, in order to better understand exciting destinations and improve fluency in useful and interesting language.

### Course Benefits:

- Smaller class sizes
- Cultural and historical visits
- A more mature peer group
- Access to our Twin e-learning platform

Location: London, Dublin

English Level: Intermediate – Advanced

Student Age: 30+

Lessons: 20 per week (15hrs)

Duration 1-2 weeks

Max Class size: 8

### Availability:

Starts throughout the year in London, and fixed dates at Dublin. Contact us for more information.

Certificate of attendance upon completion

### Sample English for 30+ Programme

Time	Monday	Tuesday	Wednesday	Thursday	Friday
09.00 - 11.00	General English	General English	General English	General English	General English
11.30 - 12.30	Irish culture	Local knowledge – prepare for visit	Irish history	Current affairs	Local knowledge – prepare for visit
12.30 - 13.30	Student lunch	-	-	Student lunch	-
Afternoon	-	Stately home visit	-	-	Museum visit
Evening	-	-	Theatre Trip	-	-

More advanced, culture-first learning experience



Location: London, Dublin, Eastbourne

English level: Intermediate - Advanced

Student Age 16+

Lessons: 30 per weeks (22.5hrs)

#### Availability:

Available year-round in Dublin, and on fixed dates in London and Eastbourne. Contact us for more information.

## English for Business Professionals

Our course for Business Professionals focuses your English learning on your career and workplace.

A course for professionals combining General English morning lessons, and English for Careers in the afternoon classes, along with two one-to-one lessons.

This course allows you to improve your general English and your communications skills for the workplace. It also helps your international job prospects, as you will have more experience speaking with clients and contacts from around the world. Your two personalised one-to-one sessions focus on your needs, helping you reach your business communication goals.



### Course Benefits:

- One-to-one lessons help meet personalised goals
- Improving workplace communication skills helps boost employability
- Regular assessment and feedback
- Access to our Twin e-Learning platform



Combine English development with boosting your career goals





# Professional Development for Teachers

We help you improve classroom performance, and knowledge of teaching methodologies and techniques, to improve your use of English in the classroom.

Our goal is to provide quality professional development courses to teachers. We have increased our course selection with many new and existing courses available for teachers worldwide. We offer a wide range of different course topics, each with options including various durations and start dates throughout the year. For those who wish to upskill their English, options with English tuition are available for most of our courses

## European Union teachers – Get help with funding applications



Whichever programme you choose, Twin provides compliant application documentation, making applying easier and faster for you and your school.



Scan the QR to see our dedicated Teacher Development brochure.

Locations: London, Dublin, Eastbourne

English level: Intermediate - Advanced

Student Age: 16+

London - 40 per week (30hrs)

Dublin - 45 per week (33hrs)

Eastbourne - 40 per week (30hrs)

### Availability:

Fixed dates in Dublin and on demand for closed groups in all locations. Contact us for more information.

## Courses (subject to availability):

- Using Technology in the Classroom
- Modern Methodologies for the Language Classroom
- Theory/Practice of CLIL
- Practice of Project Based Learning
- Maximising the Potential of Work Experience

Certificate of attendance upon completion



Locations: London

English level: Beginner - Advanced

Student Age: 10+

Lessons: 20 per week (15hrs)

**Availability:**

Fixed start dates throughout the year.  
Contact us for more information.

## Parent and Junior English

An ideal English summer course for adults and juniors who want to improve their English skills.

The summer break is a perfect time for parents and children to enjoy their time together. Now they can also learn and improve their English as a family! Parents and children study English in the same school but in different classes more suitable to their age.

After a morning of learning, the family attend a fun programme of afternoon activities and excursions together.

### Course Benefits:

- A fun activity programme for everyone
- Learn and practise English with your family
- Improved grammar and vocabulary

### Sample Programme

Week 1	Monday	Tuesday	Wednesday	Thursday	Friday
09:00 - 12:30 including break	English lessons	English lessons	English lessons	English lessons	English lessons
13:30 - 17:00 including break	Walking tour	Excursion	Excursion	Excursion	Activity

#### Week 2

09:00 - 12:30 including break	English lessons	English lessons	English lessons	English lessons	English lessons
13:30 - 17:00 including break	Excursion	Walking tour	Excursion	Excursion	Excursion

Fun for the whole family, learn English at the same time





# Junior English

Looking for a fun way to spend summer? With this course you can improve your English and discover more of the UK.

Summer in the UK is one of the best times to visit. We help you make the most of the season by organising exciting things for you to do in the afternoon. Your English lessons will have an interesting new topic/theme every week. Each afternoon you will explore a different aspect of English culture and history with museum visits, and walking tours.

Locations: London

English level: Elementary - Advanced

Student Age: 10-17

Lessons: 20 per week (15hrs)

## Course Benefits:

- A fun activity programme for juniors
- Communicate more effectively
- Improved understanding of English grammar and vocabulary

### Availability:

Fixed start dates throughout the year – Contact us for more information.

## Sample Programme

Week 1	Monday	Tuesday	Wednesday	Thursday	Friday
09:00 - 12:30 including break	English lessons	English lessons	English lessons	English lessons	English lessons
13:30 - 17:00 including break	Walking tour	Excursion	Excursion	Excursion	Activity

### Week 2

09:00 - 12:30 including break	English lessons	English lessons	English lessons	English lessons	English lessons
13:30 - 17:00 including break	Excursion	Walking tour	Excursion	Excursion	Excursion

Mix fun activities with interesting classes



Location: London, Dublin, Eastbourne

English level: Beginner - Advanced

Student Age: 16+

Lessons: In one-hour sessions

#### Availability:

This course is bookable upon request

## One-to-one English

Focused tuition with one teacher and one student.

One-to-one courses are ideal if you want to develop your English for a specific purpose or if you need more individual attention to improve your General English skills. After discussing your personal aims, we will then make sure that your lessons meet your requirements. One-to-one English puts you in charge. You decide how many lessons per week, and at which pace you want to learn. This programme can help improve your exam technique, interview preparation, or teach you specialised business vocabulary such as Legal English. You can take one-on-one classes alone or add them to another course if you would prefer to mix dedicated and group learning.



### Course Benefits:

- Individual attention
- Improved confidence
- Faster progression
- Lessons around your schedule
- Access to our Twin e-learning platform



Learn at a pace that works for you with one-on-one classes





## Courses for Closed Groups

Adjust the Twin Experience to maximise group learning.

For groups that wish to learn English for a specific purpose, such as work or study, we can create a personalised course just for you. We work with you to understand your requirements and objectives, then design a highly effective teaching programme to meet your expectations and learning goals. Timetables are flexible and you can book as few or as many lessons as you require. This focus on your specific needs allows you to progress in exactly the way you want to.

Location: London, Dublin, Eastbourne

English level: Elementary - Advanced

Student Age: 10+

Lessons: Flexible per your needs

### Availability:

Closed groups courses are available year-round. Contact us for further information.

## Course Examples

- Financial English
- Marketing English
- Legal English - Law Public/Commercial
- English for Engineers
- English for Aviation - Crew/Aeronautical
- Medical English
- Academic English
- Communication Skills
- School or University exam preparation
- Work preparation programme
- PCTO (percorsi per le competenze trasversali)

Please note: All courses in this brochure are available year-round for closed group bookings





Location: London, Dublin, Eastbourne

English level: Intermediate - Advanced

Student Age: 16+

Lessons: 20 per week (15hrs)

#### Availability:

Available for closed groups year-round.  
Contact us for further information.

Certificate of attendance upon completion

## Work Skills and Employability

This course is focused on improving your confidence, both applying for work and in the workplace.

With lessons on interview skills, and a CV writing module, you will come out of our Work Skills and Employability course with the confidence to apply for whatever job you are aiming for. Employment doesn't end when you get the job, and neither does this course, with modules dedicated to the skills you need while at work.

### Course Benefits:

- Special focus put on workplace communication
- Experience with simulated job interviews
- Confidence in the job application process and CV writing
- Training in core workplace skills like emails and presentations
- Access to our Twin e-learning platform

### Sample Work Skills and Employability Programme

Time	Monday	Tuesday	Wednesday	Thursday	Friday
09.00-10.30	Introduction to the course	Interview Skills: etiquette and expectations	Interview formats	Business emails	Business presentations
11.00-12.30	What makes a strong CV?	Interview Skills: the STAR technique	Mock interviews	Peer correction of business emails	Mini graph presentation

Feel confident in the job application process



Our Courses



# Young Entrepreneur

Take control of a project, start to finish, and learn key business skills.

The Young Entrepreneur programme puts you in the shoes of a business professional, working on branding and sales pitching for a product. This teaches valuable workplace skills and builds confidence in using English in a workplace environment.

Location: London, Dublin, Eastbourne

English level: Intermediate - Advanced

Student Age: 16+

Lessons: 20 per week (15hrs)

## Course Benefits:

- Experience in workplace communication
- Practical training with simulated project pitches and feedback
- Confidence in presenting and improving projects in the workplace
- Access to our Twin e-learning platform

## Availability:

Available for closed groups year-round.  
Contact us for further information.

## Sample Young Entrepreneur Programme

Week 1	Monday	Tuesday	Wednesday	Thursday	Friday
09.00-10.00	Intro to YEP course	Business aims and objectives	Company profiles	Negotiations	Presentations
10.15-11.30	Intro to project	Project: Branding	Project: Business plan	Project: poster	Project: advert preparation
11.45-12.30	Project: creating the advert	Project: sales pitch preparation	Project: sales pitch practice	Project: sales pitch rehearsal	Awards ceremony

Learn from managing your own project



## Other Twin Products

We are passionate about helping people achieve their goals and have offerings suitable for all ages.

### School Group Travel

For those looking for fully organised travel experiences across the UK, Ireland, and Spain, we provide bespoke school trips and travel tours.

Find out more at: [www.twingrouptravel.com](http://www.twingrouptravel.com)



### Internships & Work Experience

Short and longer term work experience programmes are available in a variety of industries and countries.

Find out more at: [www.twininternships.com](http://www.twininternships.com)

### Summer Centres

Our summer programmes combine learning, exploration and action-packed opportunities throughout the year for young learners, across the UK and Ireland.

Find out more at: [www.twinsummercentres.com](http://www.twinsummercentres.com)



Please contact a member of our friendly sales team to learn more about our other products

# Quick reference guide

Course	Age	English Level	Lessons	Location		
• General English				London	Dublin	Eastbourne
General English - Morning	16+	Beginner - Advanced	20	●	●	●
General English - Afternoon	16+	Beginner - Advanced	20	●	●	-
IELTS Preparation - Morning or Afternoon	16+	Intermediate - Advanced	20	-	●	-
• Intensive English				London	Dublin	Eastbourne
English + IELTS Preparation	16+	Intermediate - Advanced	28	●	●	●
English + Communication Skills	16+	Beginner - Advanced	28	●	●	●
English + English for Careers	16+	Beginner - Advanced	28	●	●	●
• English Unlimited				London	Dublin	Eastbourne
English Unlimited	16+	Beginner - Advanced	40 <small>Dublin/London</small>	●	●	●
			36 <small>Eastbourne</small>			
• Academic Year in Ireland				London	Dublin	Eastbourne
General English - Morning or Afternoon	21+	Beginner - Advanced	20	-	●	-
IELTS Preparation - Morning or Afternoon	21+	Beginner - Advanced	20	-	●	-
• Specialist Courses and One-to-One Lessons				London	Dublin	Eastbourne
English for Business Professionals	16+	Intermediate - Advanced	30	●	●	●
English for 30+	30+	Intermediate - Advanced	20	●	●	-
One-to-one	16+	Beginner - Advanced	1-hour long sessions	●	●	●
Parent and Junior English	10+	Beginner - Advanced	20	●	-	-
Junior English	10+	Beginner - Advanced	20	●	-	-
Professional Development for Teachers	18+	Beginner - Advanced	40 <small>London / Eastbourne</small>	●	●	●
			45 <small>Dublin</small>			
Work Skills and Employability	16+	Intermediate - Advanced	20	●	●	●
Young Entrepreneur	16+	Intermediate - Advanced	20	●	●	●
• Part-time English				London	Dublin	Eastbourne
General English	16+	Beginner - Advanced	12	●	●	●
IELTS Preparation	16+	Intermediate - Advanced	8	●	●	●
Communication Skills	16+	Beginner - Advanced	8	●	●	●
English for Careers	16+	Beginner - Advanced	8	●	●	●

One lesson is 45 minutes long

For more information about  
our services, please visit:

**Twin Group:**

[twingroup.org](https://twingroup.org)

**English Centres:**

[twinenglishcentres.com](https://twinenglishcentres.com)

**School Group Travel:**

[twingrouptravel.com](https://twingrouptravel.com)

**Work Experience:**

[twininternships.com](https://twininternships.com)

**Summer Centres:**

[twinsummercentres.com](https://twinsummercentres.com)

**Twin's commitment to safeguarding**

The safety and well-being of students is our highest priority. Our centres are accredited by the British Council in the UK, and ACELS in Ireland, and our safeguarding standards are enforced.



Accredited by the  
**BRITISH COUNCIL**  
for the teaching  
of English in the UK

